

# TERRA CLASSIC

COMBINES INCOMPARABLE ELEGANCE WITH EXQUISITE CRAFTSMANSHIP



AVAILABLE IN BEAUTIFUL COLORS AND A VARIETY OF SIZES TO  
CREATE JUST ABOUT ANY TILE DESIGN IMAGINABLE

SCS CERTIFIED, 55% RECYCLED GLASS AND MADE IN THE USA

QUALIFIES FOR LEED® (LEADERSHIP IN ENERGY & ENVIRONMENTAL DESIGN) CREDITS

RECOMMENDED FOR ALL RESIDENTIAL AND LIGHT COMMERCIAL APPLICATIONS

EXCELLENT DURABILITY AND EASY TO CLEAN SURFACE

OUTSTANDING STAIN AND WEAR RESISTANCE PROPERTIES

COMPLETE LINE OF TRIM FOR FLOOR, WALL AND COUNTER-TOP APPLICATIONS

EMBOSSED/DEBOSSED DECOS AVAILABLE TO COMPLEMENT ANY FLOOR OR WALL DESIGN

## TERRA GREEN

CERAMICS, INCORPORATED

## COLORS AVAILABLE

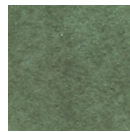
Emerald	Galena
Ivory	Onyx
Peridot	Trona
Purple Sapphire	Quartz
Rutile	Sapphire
Sylvanite	Topaz

## SIZES AVAILABLE

4" x 4"	4" x 8"
3" x 6"	6" x 6"
8" x 8"	12" x 12"

## TRIM

- 4" x 4" Bullnose
- 4" x 8" Bullnose
- 6" x 6" Bullnose
- 8" x 8" Bullnose
- 12" x 12" Bullnose
- 4" x 4" Bullnose Corner
- 6" x 6" Bullnose Corner
- 8" x 8" Bullnose Corner
- 12" x 12" Bullnose Corner
- 6" Quarter Round
- 4" V-Cap
- 6" V-Cap
- 4" V-Cap Corners
- 6" V-Cap Corners



Emerald



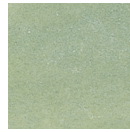
Galena



Quartz



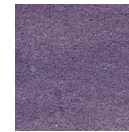
Ivory



Peridot



Topaz



Purple Sapphire



Trona



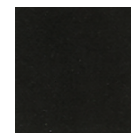
Sapphire



Sylvanite



Rutile



Onyx

NOTE: Variation in shade, color, texture and size are inherent in ceramic tile. Always make final color selection after viewing several samples.

# TERRA CLASSIC

COMBINES INCOMPARABLE ELEGANCE WITH  
EXQUISITE CRAFTSMANSHIP

## PERFORMANCE DATA

DESCRIPTION	TEST METHOD	ANSI A-137.1	TEST RESULTS
Water Absorption	ASTM C373	≤ 5.0%	< 3.0%
Breaking Strength	ASTM C648	Avg. ≥ 250 lbs.	Passed
Bond Strength	ASTM C482	Avg. > 50 psi	Passed
Frost Resistance	ASTM C1026	Glaze shows no crazing & body shows no sign of disintegration	Passed
Crazing	ASTM C424	Tile shows no evidence of crazing	Passed
Chemical Resistance	ASTM C650	None	Passed
Hardness	Mohs' Scale	None	8
Abrasion Resistance	ASTM C1027	None	Class III

The manufacturer recommends a 3/8" nominal grout joint.



Terra Green Ceramics has been manufacturing recycled glass ceramic tile for more than 30 years. You could say we were the first, and you would be correct. Yes, the first recycled content ceramic tiles on the market, and SGS-certified for 55% pre-consumer content.

We start with blended raw materials consisting mostly of recycled glass, clays, sand and feldspar, which is extruded to thickness and cut to size. The tile is then time-loaded into the kiln for firing. Terra Green uses a single, fast-fire process using natural gas in both the dryers and the kiln.

In-house recycling involves two catch conveyors and a throw-back conveyor which accumulate material and send it back for recycling. In addition, we use a glaze re-claimer at the spray line which separates the glaze from the water, allows clean water to run back through the system, and the residual glaze to turn to powder for proper disposal, not into waste water.

We are based in Richmond, IN, in the heartland of America, and operate an energy-efficient plant run by a employees who are good at what they do, and very proud of the products they produce.

