

# TERRA ELEMENTS

ECOLOGICAL AND ECONOMICAL COMMERCIAL SERIES



EARTHY, CONTEMPORARY COLORS PROVIDE DESIGNERS A SATEN FINISH WITH AN EXCELLENT COF

SCS CERTIFIED, 55% RECYCLED GLASS AND MADE IN THE USA

QUALIFIES FOR LEED® (LEADERSHIP IN ENERGY & ENVIRONMENTAL DESIGN) CREDITS

RECOMMENDED FOR ALL RESIDENTIAL AND COMMERCIAL APPLICATIONS

EXCELLENT DURABILITY AND EASY TO CLEAN SURFACE

OUTSTANDING STAIN AND WEAR RESISTANCE PROPERTIES

COMPLETE LINE OF TRIM FOR FLOOR AND WALL APPLICATIONS

## TERRA GREEN

CERAMICS, INCORPORATED

**STANDARD COLORS AVAILABLE**

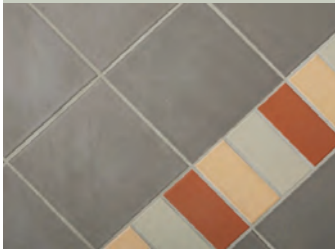
- Air
- Clay
- Dune
- Sand
- Stone

**PREMIUM COLORS AVAILABLE**

- Earth
- Fire
- Jade
- Shale
- Water

**SIZES AVAILABLE**

- 4" x 4"
- 4" x 8"
- 8" x 8"
- 12" x 12"



**TRIM**

- 4" x 4" Bullnose
- 8" x 8" Bullnose
- 12" x 12" Bullnose
- 4" x 4" Bullnose Corner
- 8" x 8" Bullnose Corner
- 12" x 12" Bullnose Corner
- 4" x 8" Cove Base
- 6" x 8" Cove Base
- 4" x 8" Cove Base Corner
- 6" x 8" Cove Base Corner

Round Top and Square Top Cove  
Base and Corners Available



**Air**



**Clay**



**Dune**



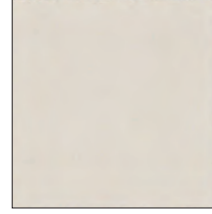
**Earth**



**Fire**



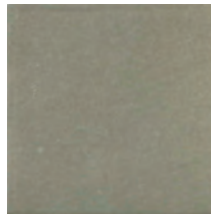
**Jade**



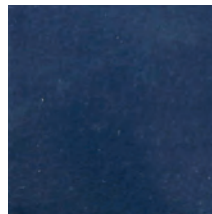
**Sand**



**Shale**



**Stone**



**Water**

NOTE: Variation in shade, color, texture and size are inherent in ceramic tile. Always make final color selection after viewing several samples.

# TERRA ELEMENTS

ECOLOGICAL AND ECONOMICAL  
COMMERCIAL SERIES

**PERFORMANCE DATA**

DESCRIPTION	TEST METHOD	ANSI A-137.1	TEST RESULTS
Water Absorption	ASTM C373	≤ 5.0%	< 3.0%
Breaking Strength	ASTM C648	Avg. ≥ 250 lbs.	Passed
Bond Strength	ASTM C482	Avg. > 50 psi	Passed
Coefficient of Friction	ASTM C1028	≥ 0.60* (wet & dry)	Passed
Frost Resistance	ASTM C1026	Glaze shows no crazing & body shows no sign of disintegration	Passed
Chemical Resistance	ASTM C650	None	Passed
Hardness	Mohs' Scale	None	8
Abrasion Resistance	ASTM C1027	None	Class IV

\*ADA Recommendation.  
The manufacturer recommends a 3/8" nominal grout joint.



Terra Green Ceramics has been manufacturing recycled glass ceramic tile for more than 30 years. You could say we were the first, and you would be correct. Yes, the first recycled content ceramic tiles on the market, and SCS-certified for 55% pre-consumer content.

We start with blended raw materials consisting mostly of recycled glass, clays, sand and feldspar, which is extruded to thickness and cut to size. The tile is then time-loaded into the kiln for firing. Terra Green uses a single, fast-fire process using natural gas in both the dryers and the kiln.

In-house recycling involves two catch conveyors and a throw-back conveyor which accumulate material and send it back for recycling. In addition, we use a glaze re-claimer at the spray line which separates the glaze from the water, allows clean water to run back through the system, and the residual glaze to turn to powder for proper disposal, not into waste water.

We are based in Richmond, IN, in the heartland of America, and operate an energy-efficient plant run by a employees who are good at what they do, and very proud of the products they produce.

